



**508G/4 Devlin Street Ryde NSW**

1  1  1 

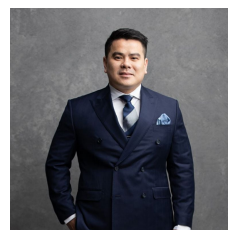
Located above Top Ryde City, developed by an award-winning builder 'Crown Group' this peaceful elevated apartment offers scenic views and an extraordinary resort lifestyle. With easy access schools, University and 100 of restaurants/shops making it desirable for owner occupier (for first home buyer too!) and investor alike.

**Price** : \$ 588,000

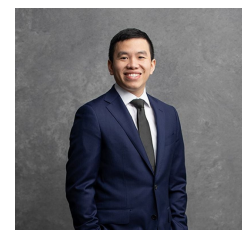
**View** : <https://www.mascotpartners.com.au/7705536>

**Key Features of the property:**

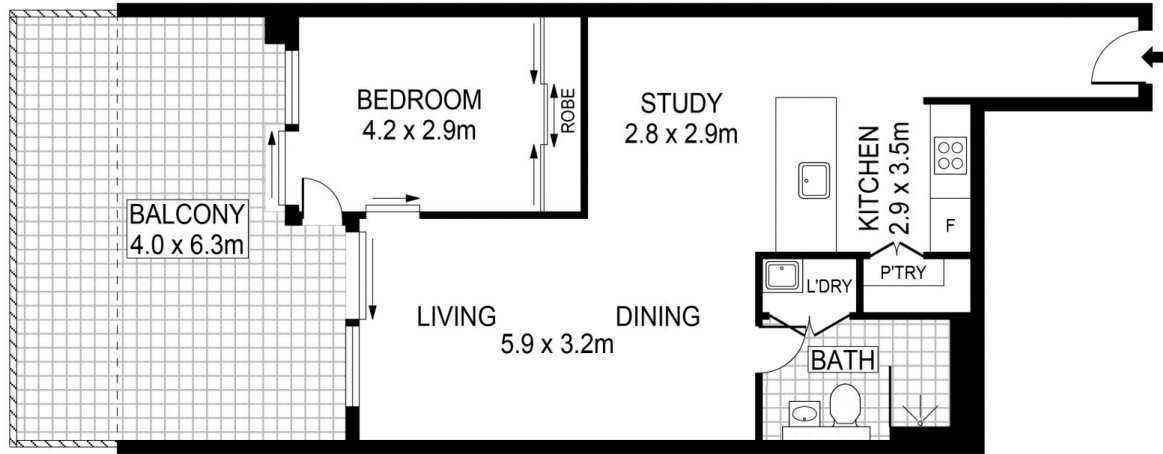
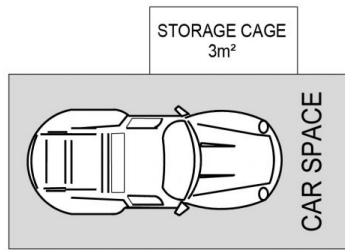
- Luxurious modern one bedroom with study area and big balcony
- Security undercover car space & storage
- Build-in Wardrobe, quality joinery, ducted air-conditioning
- Concealed Laundry & Dishwasher
- Stylist Modern Kitchen with quality material
- Video intercom entry, on-site manager and building security
- Free access to well-maintained resort lifestyle facilities



**Junianto Junianto**  
02 8357 3377



**Reinard Surya**  
02 8357 3377



LEVEL FIVE



This floor plan is for marketing purposes and is to be used as a guide only. All efforts have been made to ensure its accuracy although interested parties are urged to rely on their own enquiries.