



**6 Mitchell Street Enfield NSW**

A new build of luxurious terrace residences nestled on the edge of sprawling parkland, 'The Henley' is a masterpiece of modern living. With a choice of two, three and four bedroom residences, and 22 floorplan options, 'The Henley' allows you to live in your personalised dream home. With direct access to the magnificent 12 hectare Henley Park, private outdoor entertaining areas and landscaped gardens, your wellness is assured.

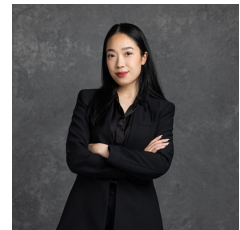
Light-filled and calm, The Henley's park locale belies the fact that the CBD is just 10 kms away. Each terrace home features grand spaces complemented by quality finishes and appliances. All residences have private, terraces and rear gardens. Boasting large picture windows that fill the spaces with natural light and an open plan that highlights the serene location. 'The Henley' is pet friendly, comes with dedicated security systems, and environmental touches

**Price** : Start from \$1,605,000

**View** : <https://www.mascotpartners.com.au/7766757>



**Junianto Junianto**  
**02 8357 3377**



**Kaylee Ho**  
**02 8357 3377**