

### 253-273 Normanby Road South Melbourne VIC

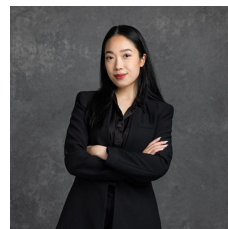
R.Iconic 1, 2 & 3-bedroom apartments in an evolving pocket of South Melbourne. Move in today.

**Price** : Start from \$582,000

**View** : <https://www.mascotpartners.com.au/7767303>

#### Protected Views

Surrounded by low-rise residential and restricted height zones, with a 10-hectare park running all the way to the beach. R.Iconic will be the only building with protected, endless views to the water and the city, within walking distance of South Melbourne Market, Port Melbourne Beach, Albert Park Lake, Melbourne's CBD and its Arts Precinct.



**Kaylee Ho**  
02 8357 3377



**Junianto Junianto**  
02 8357 3377

#### Lifestyle

At R.Iconic, lifestyle is everything. R.Iconic allows residents the luxury of time spent living well. With each home carefully crafted as a restful space away from life's stresses, wind down with spacious living areas, an