

165-171 Milton Street Ashbury NSW

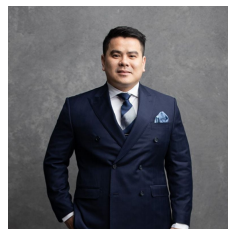
Contemporary. Refined. Enriching. Ashbury Terraces encapsulates the area's unique local character and delivers a home to be enjoyed by its residents - now and for generations to come.

When a project's architect and interior team work together, the harmonious confluence between the external and internal design is undeniable. With carefully considered architecture, textural diversity, and European finishes throughout, each 3-bedroom terrace features multi-level outdoor entertaining areas and flourishing gardens to celebrate the best of living both indoors and out.

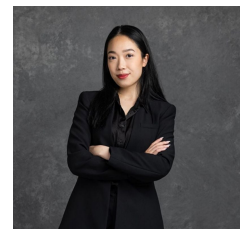
At the centre of the development is The Garden. A private oasis at the heart of the project that features a luxurious pool built into the landscape, dining spaces with barbeque facilities, quiet areas to retreat and reflect, and a fully

Price : Start from \$2,050,000

View : <https://www.mascotpartners.com.au/7777027>



Junianto Junianto
02 8357 3377



Kaylee Ho
02 8357 3377