



## 26 Elizabeth Street Liverpool NSW

Setting a new benchmark for mixed-use residential projects in south-west Sydney, The Liverpool is brought to you by trusted Sydney-based developers, FYVE.

Offering 193 premium apartments, many of which are affordably priced for first home buyers and eligible for NSW government grants and incentives, The Liverpool presents an unparalleled opportunity to experience design and lifestyle excellence in a thriving south-west Sydney location.

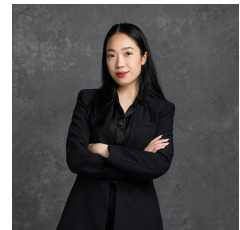
With apartments featuring the best of modern living and convenience, residents will enjoy open-plan living spaces that extend onto generous balconies and embrace the extensive views stretching from the Georges River through to Parramatta CBD.

**Price** : Start from \$692,000

**View** : <https://www.mascotpartners.com.au/7777030>



**Junianto Junianto**  
02 8357 3377



**Kaylee Ho**  
02 8357 3377