



**209/149-161 O'Riordan Street Mascot NSW**

2 🛏 2 🚿 3 🚗

**\*\*Holding fee received, all the inspections are canceled!\*\***

**View :** <https://www.mascotpartners.com.au/7831823>

Centrally positioned in the heart of Mascot, within the highly-regarded 'Pinnacle', this apartment is just a 450m stroll to Mascot station, easily accessible to the city and airport with a good variety of restaurants, cafes, shops and supermarkets.

This is a spacious apartment with neutral tones featuring

- Brand new carpet and vanities
- \*Rare\* 3 car spaces with large storage cage
- Comes with large fridge, dryer and washing machine
- Expansive open plan with distinct lounge & dining areas
- Study nook
- Sliding glass doors to balcony with ample room for alfresco dining
- Kitchen with spacious benchtop, oven, gas cooktop and



**Anthony Lee**  
02 8357 3377

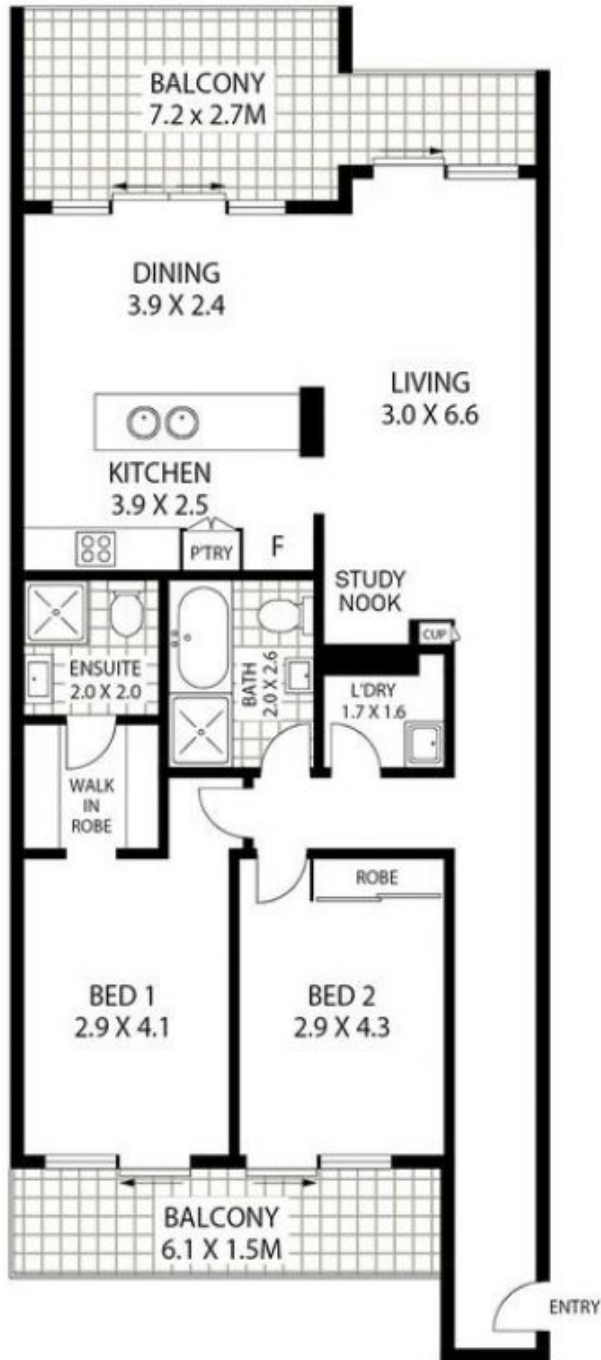


**Sho Sakurai**  
02 8357 3377

property from every 

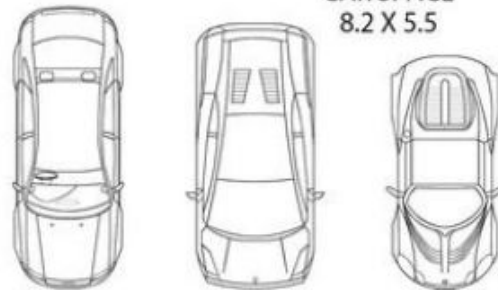
**Local Council**  
Bayside Council  
444 - 446 Princes Highway,  
Rockdale NSW 2216  
Phone: 1300 581 299

**Strata Manager**  
Wellman Strata  
Suite 5, Level 9, 189 Kent Street  
Sydney NSW 2000  
Phone: (02) 8065 6575



LOCK-UP  
STORAGE  
CAGE

SECURE  
CAR SPACE  
8.2 X 5.5



LEVEL TWO



**209/149-161 O'RIORDAN STREET**

**MASCOT**

**Floor Plan Disclaimer:** Mind the Gap (MTG) floor plans / site plans are intended as an approximate guide only. No representations or warranties of any nature are given or intended and any person using this information other than as a guide should always rely on their own enquiries. Contact 1300 133 145 - [www.mindthegap.com.au](http://www.mindthegap.com.au) - <http://www.mindthegap.com.au> - Photography, Video, Drone, Interactive, Floorplans, Copywriting.

