



106/3 Madden Close Botany NSW

1  1  1 

This spacious one-bedroom plus study apartment, situated in the Pemberton On The Park development, stands out among its counterparts. Boasting contemporary interiors and a generously designed layout, this elegant apartment exemplifies luxurious executive living. Tucked away in a tranquil and private enclave, it delivers a convenient village lifestyle, with a variety of cafes and shops just a few steps from the entrance.

Key features include:

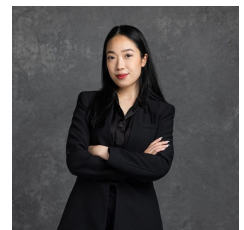
- A generously sized bedroom with mirrored built-in wardrobes
- Additional spacious study space
- A modern kitchen equipped with stainless steel appliances, including a gas stove and dishwasher
- A spacious combined lounge and dining area

Price : \$ 635,000

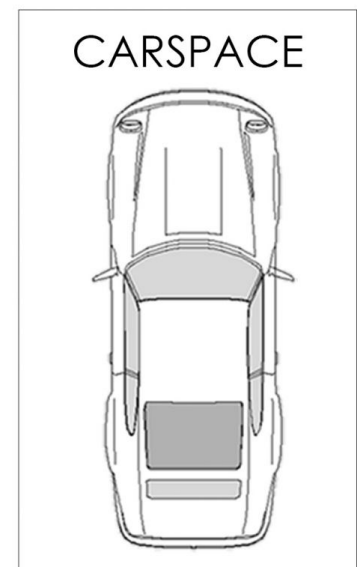
View : <https://www.mascotpartners.com.au/7835897>



Junianto Junianto
02 8357 3377



Kaylee Ho
02 8357 3377



FLOOR PLAN



106/3 Madden Close, Botany

WARNING: DISCLAIMER This information is not to be relied upon. It is strictly used for marketing and illustration purposes only. All measurements are approximate. Not to scale. No liability accepted. You must rely on your own inquiries and seek advice from your solicitor. Floor plan by cnkplan@cnkplan.com.au / www.cnkplan.com.au