



Oxford Street Epping NSW

Located on the prestigious East side of Epping in the heart of the Town Centre, CIELO will be Epping's tallest tower rising 29 levels, commanding spectacular views of the Sydney CBD, Macquarie Park and surrounding National Parks

Set to become an architectural masterpiece, CIELO is a collaboration between Meriton and award winning architects Scott Carver. Home to a collection of 215 oversized residences graced with the finest finishes

Buy with certainty from Australia's most trusted developer boasting a rich 60 year history, 100% completion record and 4.5 star iCIRT rating

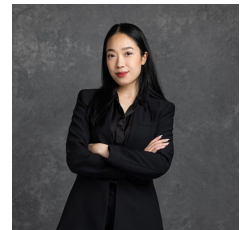
A luxurious selection of 1+MPR, 2 & 3 bedroom residences, most enjoying corner positions and only one

Price : Start from \$794,000

View : <https://www.mascotpartners.com.au/7842438>



Junianto Junianto
02 8357 3377



Kaylee Ho
02 8357 3377