



6/268-270 Unwins Bridge Road Sydenham NSW

2 🏠 1 🚗

Situated within a small complex, this dwelling presents an excellent opportunity for those seeking an entry-level home or a promising investment. Impeccably maintained, the residence boasts an open-concept living space, a contemporary kitchen equipped with gas cooking facilities, and an inviting balcony for entertaining.

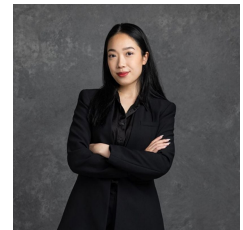
Price : \$ 630,000

View : <https://www.mascotpartners.com.au/7938622>

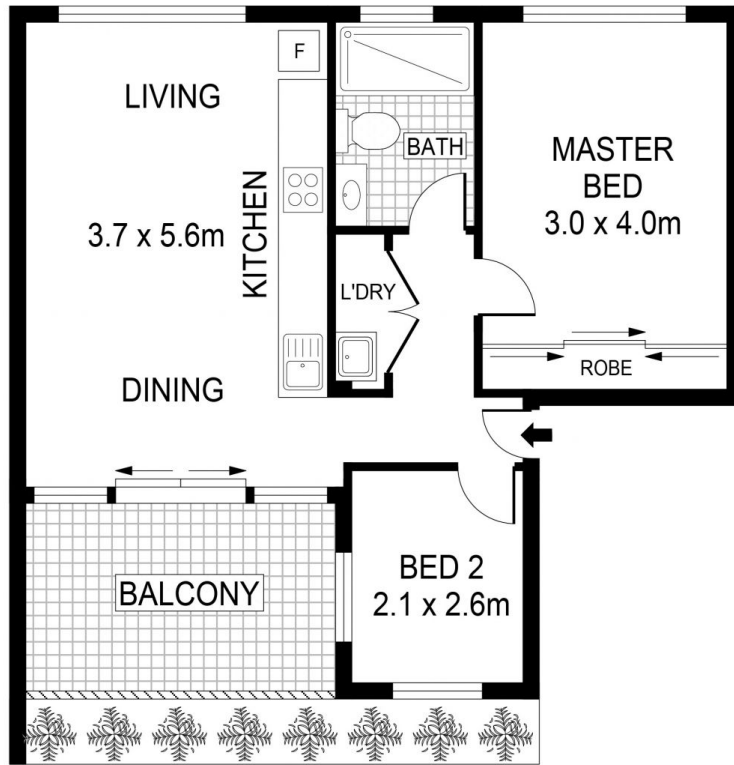
Sydenham, a sought-after suburb nestled between St Peters and Tempe, has gained popularity for various reasons. Its proximity to the CBD, an array of nearby leisure and recreation amenities, and the ongoing gentrification trend in the area contribute to its appeal. Notably, Sydenham stands out for its exceptional transportation links to the CBD, with Sydenham Station serving as a key interchange for the Eastern Suburbs & Illawarra, Bankstown, and Airport & East Hills lines.



Junianto Junianto
02 8357 3377



Kaylee Ho
02 8357 3377



This floor plan is for marketing purposes and is to be used as a guide only. All efforts have been made to ensure its accuracy although interested parties are urged to rely on their own enquiries.