



Pymont

2  2  1 

Located on the prized northern Pymont peninsula in 'Jacksons Landing' this bright contemporary apartment with a northwest aspect offers great open plan space, privacy and amazing Anzac Bridge and harbour views.

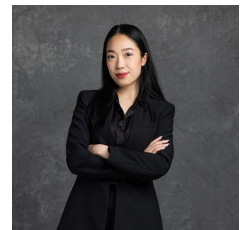
The residence is positioned within a stroll to the harbour foreshore, waterfront parklands, local cafes, the light rail and Darling Harbour. It is also walking distance to Star City, Sydney Fish Markets and the heart of the CBD

- Access to balcony from every room
- Open plan lounge/dining flows to outdoor entertaining
- Sleek kitchen with Caesarstone island bench
- Gas cooktop with stainless steel European appliances
- Two double bedrooms with built-ins and balconies
- Master bedroom with ensuite
- Reverse cycle air conditioning

Price : \$2,500,000 - \$2,600,000
Building Size : 120 sqm
View : <https://www.mascotpartners.com.au/7945008>



Junianto Junianto
02 8357 3377



Kaylee Ho
02 8357 3377



1605/45 BOWMAN ST.

PYRMONT

SCAPE Floor Planing Disclaimer: This floor plan is conceptual only. It is provided for illustrative purposes only and should not be relied upon. We make no guarantees to the correctness of this plan. All interested parties should make and rely on their own enquiries in determining the accuracy of the information contained in this floor plan.