



24 Artarmon Road Willoughby NSW

Reimagining urban life for over 50 years, Mirvac creates exceptional living experiences through the pursuit of quality and care in every little detail, recognised by more than 700 project and industry awards.

Residents and the community will enjoy approximately 6500sqm of open space designed by internationally renowned landscapers McGregor Coxall, with parks, gardens, a lawn for active play, sheltered barbecues and a children's playground, set against the panorama of Sydney.

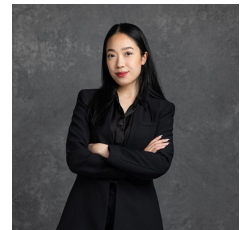
Willoughby is approximately 7 minutes' drive from the CBD yet blessed with the peace and amenity of a well-established neighbourhood. High street shopping is moments away along with schools, parks, playgrounds, sporting venues and a bushland network of walking trails, cycleways and creeks.

Price : Start From \$1,485,000

View : <https://www.mascotpartners.com.au/7981050>



Junianto Junianto
02 8357 3377



Kaylee Ho
02 8357 3377